

# SPEEDWELL

## Exhaust Systems

get the best out of your engine

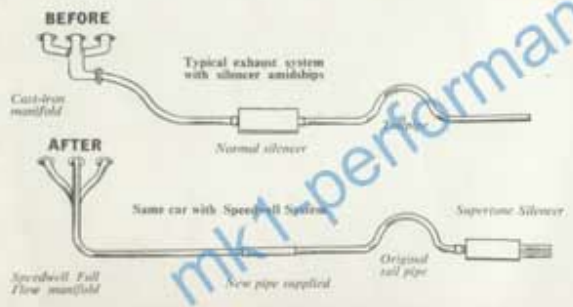
Normal baffle-type silencers hinder the flow of exhaust gases and reduce the efficiency of your engine. Speedwell Exhaust Systems, by incorporating Supertone Silencers with 'straight through' absorption allow these gases to escape freely and enable your engine to develop its full power with maximum fuel economy.

The Speedwell full-flow exhaust manifold assists in extracting residue gases from combustion chambers after each exhaust stroke, and ensures that there is no pressure build-up anywhere through the system. This guarantees maximum efficiency.

The exhaust note becomes more sporty in keeping with the extra surge you will get from your engine.

All Supertone Silencers have chrome tail pipes complying with the latest British Standard for plating. All manifolds are finished in heat-resisting silver/grey lacquer and each system is complete with all necessary brackets. As all Supertone Silencers are fitted at the rear of the car, suitable pipes are supplied where required to replace existing silencers fitted amidships. Silencers and Manifolds can, of course, be purchased separately.

From your usual dealer, or, in case of difficulty direct from us.



12 MONTHS GUARANTEE ON ALL PRODUCTS



The Speedwell Streamliner, fitted with a Clubman 70 engine and a Speedwell Exhaust System, clocked 132.206 m.p.h. over a flying mile—a Belgian National Record for cars of its class.

# SPEEDWELL

# SPEEDWELL

PERFORMANCE CONVERSIONS LTD  
163 Finchley Road, London, N.W.11  
Telephone: SPExwell 2228

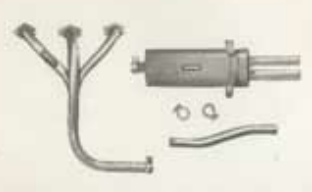
## EXHAUST SYSTEMS

# SPEEDWELL

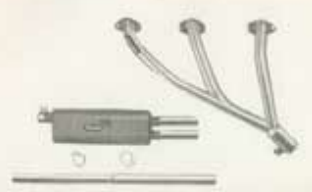
Exhaust Systems are available for all these cars



ROVER P5B  
Supertone silencer - 23.1 89g  
Full flow manifold - 53.1 18.10 g



AUSTIN 1000  
Supertone silencer - 22.1 89g  
Full flow manifold - 52.1 18.11 g



ROVER P5B  
Supertone silencer - 23.1 89g  
Full flow manifold - 53.1 18.10 g



AUSTIN 1000  
Supertone silencer - 22.1 89g  
Full flow manifold - 52.1 18.11 g



AUSTIN HEALEY SPRITE  
Supertone silencer - 22.1 89g  
Full flow manifold - 52.1 18.10 g



DAIMLER SPRINT  
Supertone silencer - 22.1 89g  
Full flow manifold - 52.1 18.11 g



EXHAUST MANIFOLD  
NOW AVAILABLE

ROVER P5B  
Supertone silencer - 23.1 89g  
Full flow manifold - 53.1 18.10 g



AUSTIN 1000  
Supertone silencer - 22.1 89g  
Full flow manifold - 52.1 18.11 g



ROVER P5B  
Supertone silencer - 23.1 89g  
Full flow manifold - 53.1 18.10 g



ROVER P5B  
Supertone silencer - 23.1 89g  
Full flow manifold - 53.1 18.10 g



ROVER P5B  
Supertone silencer - 23.1 89g  
Full flow manifold - 53.1 18.10 g



ROVER P5B  
Supertone silencer - 23.1 89g  
Full flow manifold - 53.1 18.10 g



FIAT 600  
NOW AVAILABLE



RENAULT DAUPHINE  
NOW AVAILABLE



NEW MODEL  
TO BE ANNOUNCED