

# BLUEMEL'S



CATALOGUE OF

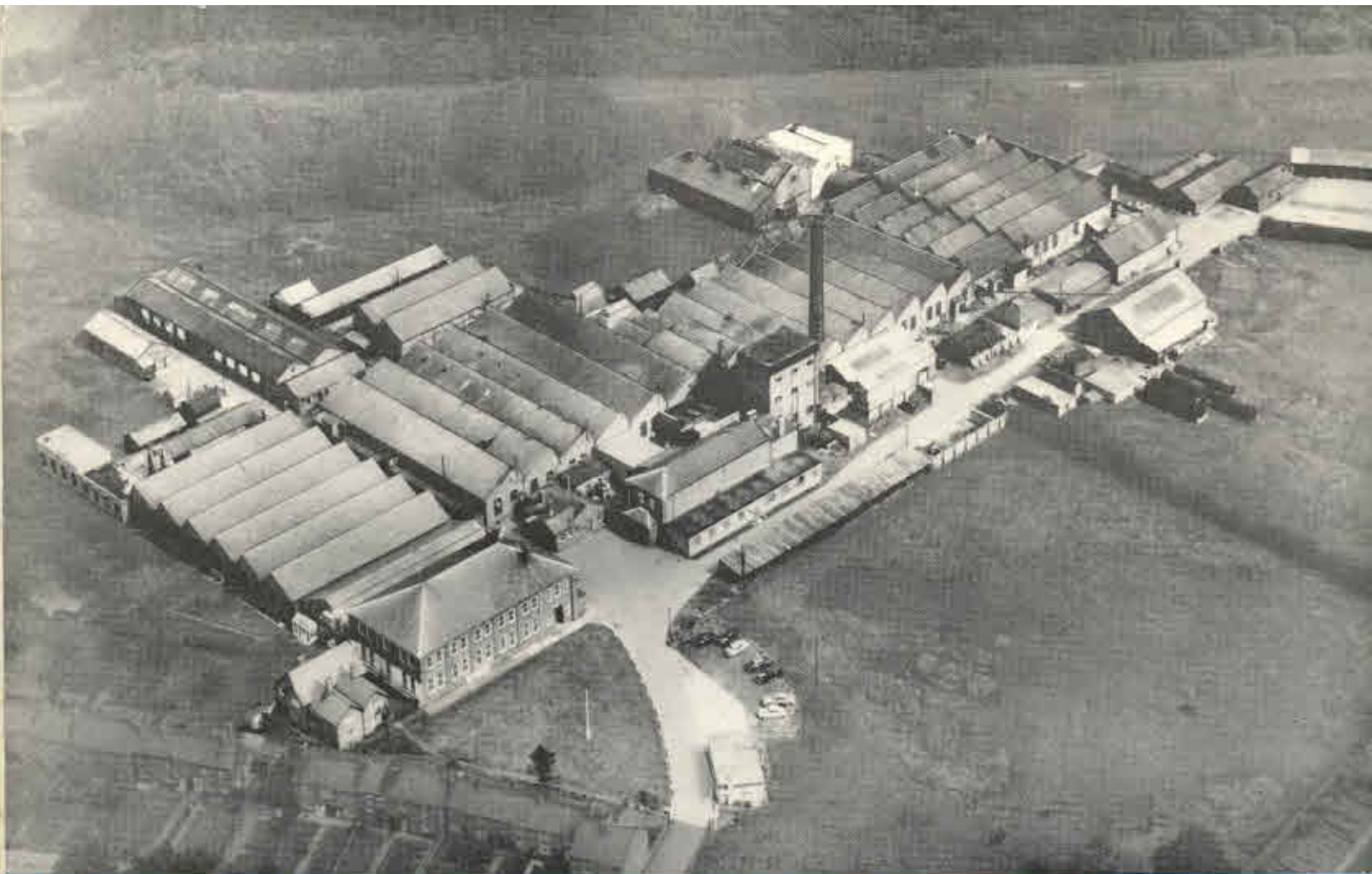
MOTOR ACCESSORIES



TRADE MARK

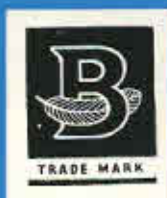
*Famous for Quality*

BLUEMEL BROS. LIMITED, WOLSTON, LONDON, NORTHAMPTON



*Aerial View of Bluemel's Works, Wolston*

**BLUEMEL BROS. LIMITED**



**WOLSTON Nr. COVENTRY**

Telephone—Wolston 244 (Coventry)

Telegrams: Bluemel, Wolston

**DOVER WORKS: ST. JAMES PARK ROAD, NORTHAMPTON**

Telephone—Northampton 51505

**LONDON NUMBER PLATE SERVICE: 216 GT. PORTLAND ST., W.1**

Telephone—Euston 7626



# New!

## 'FLAT TOP' OPAL

Contemporary styled characters with a lustrous white opal effect which is in complete harmony with, and particularly suited to the pastel colours of modern cars.

## 'FLAT TOP' SILVER

These distinctive characters are in non-reflecting silver plastic and are a fitting complement to the appearance of any car.

*All these new characters are illustrated here at their best — on plates with polished edges for a small extra cost.*

## 'FLAT TOP' WHITE

The pure white of these plastic characters emphasizes their smart, clearly defined, bevelled profile. Entirely free from corrosion, they will remain impeccable.

## SILVER ALLOY (Flat Top)

De Luxe, die-cast aluminium characters in a modern style. They will comprise the finest quality plate assembly for cars in the higher price range.

*Special minimum size, light alloy back plates are available to suit all leading cars.*

*Plain or polished borders are usually optional.*



# Blue Mel's

# NUMBER PLATES

with the smaller characters

**3 1/8" x 2 1/4"**  
To comply with  
M.O.T. amended  
regulations



'FLAT TOP' OPAL



'FLAT TOP' SILVER



'FLAT TOP' WHITE



SILVER ALLOY (FLAT TOP)

Gradually, Vehicle Licensing Authorities in all areas of Great Britain will change to seven symbol registrations. These 3 1/8" characters are the officially approved type for this system and may also be used for any car, commercial vehicle or three-wheeler registration with less than seven symbols.

# 3 1/8

CHARACTERS

This style offers a pleasing alternative to the bevelled shape. Popular in price. Non-reflecting silver finish.

# SILVER

'PANELLED' SILVER

# 3 1/8

CHARACTERS

A further attractive alternative where sheer white symbols are preferred.

# WHITE

'PANELLED' WHITE

# 3 1/8 & 3 1/2

CHARACTERS

Die-pressed aluminium, embossed flat polished characters and border.

# PRESSED

PRESSED

# 3 1/2 & 3 1/8

CHARACTERS

Flat, plastic characters in white or silver. Fixed with pressure sensitive adhesive.

# ADHESIVE

ADHESIVE



The clear cut classical outline of all Blue Mel's letters and figures is dignified and pleasing. They are designed to comply fully with regulations and are in character with contemporary car styling. They are rustless, corrosion resisting and enduring — easy to maintain.

## SEPARATE LETTERS AND FIGURES

To maintain the efficient EXPRESS SERVICE with which Blue Mel's meet the needs of the Motor Trade throughout the country, most S.M.M. & T. Factors carry stocks of the various types of our letters and figures and can supply them at short notice to any Garage or Motor Agent assembling Blue Mel's Number Plates.



## "PYRAMOID" CHARACTERS SECTION



"OPALESCENT"

Lustrous white opal characters. Triangular Section. For registrations with up to six symbols.

**3 $\frac{1}{2}$ "**  
**CHARACTERS**



"SILVERITE"

Silver plastic characters. Non-reflecting type. For registrations with up to six symbols.

**3 $\frac{1}{2}$ "**  
**CHARACTERS**



"WHITE PYRAMOID"

The original opaque white character, popular by tradition. For registrations with up to six symbols.

**3 $\frac{1}{2}$ "**  
**CHARACTERS**



"SATIN SILVER"

Silver anodised die-cast aluminium characters. Corrosion resisting. For registrations with up to six symbols.

**3 $\frac{1}{2}$ "**  
**CHARACTERS**

## STANDARD BLANK PLATES

Made in aluminium alloy, with a durable stove enamelled black finish to resist the severe corrosive attack to which Number Plates are usually exposed.

PRESSED available with or without polished border.

BEADED available with or without polished border.

BEVELLED. Black only.

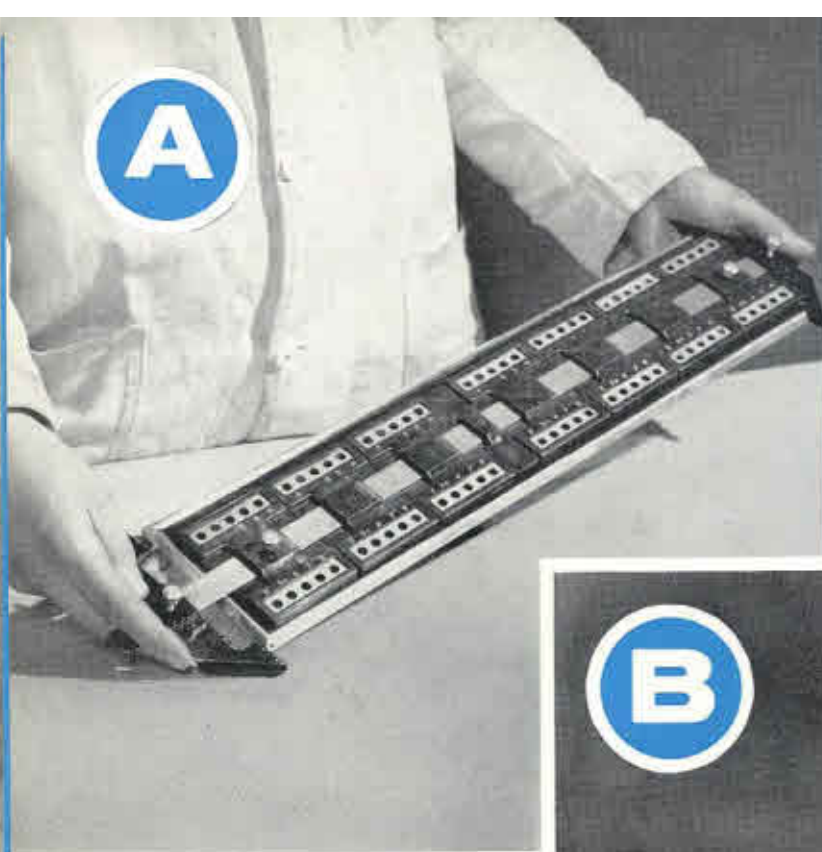
FLAT type also available. Black only.

A diagrammatic chart and assembly instructions for all our types will be sent free on request to members of the trade operating a Number Plate "Express Service" by assembling with our components.

Our List of Recommended Plates is available also on application.



**A**



# Agents

MAKE UP YOUR OWN  
NUMBER PLATES  
*as easy as ABC*

..... On the spot  
by a junior member  
of the staff .....

**A**

POSITION THE PLATE  
UNDER THE TEMPLATE

## USING OUR COMPLETE ASSEMBLY PACKS

Containing sufficient blank  
plates with letters and  
figures for immediate  
operation in your district

FULL ASSEMBLY  
EQUIPMENT IS  
INCLUDED FREE  
ON LOAN WITH  
INITIAL ORDERS

# Save!

**B**



**B**

PIERCE WITH TEMPLATE  
STILL IN POSITION

READY TO FIT  
IN LESS THAN  
10 MINUTES

**C**



**C**

FIX CHARACTERS WITH  
'STAR' LOCK-WASHERS

*Bluemel's*

PHONE CALLS • POSTAGE • DELAYS

Page Four





## REGISTRATION NUMBER PLATE ASSEMBLY PACKS

These packs—containing an initial stock of letters, figures and blank plates—provide the means for distributors to take advantage of the obvious benefits that an own assembly system offers. The original outlay is quite modest as workshop assembly equipment, which includes oblong and square type templates, is provided free on loan with agents' initial orders. Stock replacement components of all kinds are obtainable from recognised factors or, if these facilities are not available, from our works.

## DISTRIBUTORS' ORDER GUIDE

The following revised range of Packs covers almost all makes of 1962/5 Vehicles.  
(90% OF COMMERCIAL VEHICLES' REQUIREMENTS ARE MET BY PACK No. 1a)

### Pack No. 1a

Suitable for cars distributed by :—

**FORD or VAUXHALL Agents**  
ALSO FOR : BENTLEY, BRISTOL, FACEL VEGA, ISETTA,  
SIMCA, VOLKSWAGEN . . . AND COMMERCIAL VEHICLES

### Pack No. 2a

For **AUSTIN** DISTRIBUTORS  
(includes plates for rear of Austin 7)

### Pack No. 3a

Suitable for the range of cars supplied by :—

**ROOTES** DISTRIBUTORS  
(HILLMAN, HUMBER, SUNBEAM-TALBOT, SINGER)

### Pack No. 4a

For **MORRIS** Agents

Also Distributing M.G., WOLSELEY, RILEY  
(CONTAINS A WIDER RANGE OF PLATES, INCLUDING PLATES FOR MINI-MINOR)  
TOTAL 3½ DOZEN

### Pack No. 5

For **STANDARD & TRIUMPH** Agents

### Pack No. 6b

For **JAGUAR** DISTRIBUTORS  
(CONTAINS SPECIALLY CUT PLATES FOR "E" TYPE JAGUAR, REAR)

### Pack No. 7

For **ROVER** DISTRIBUTORS  
(CONTAINS SPECIAL LARGE PLATES FOR REAR FITTING)

### Pack No. 8

Suitable for the following cars :—

ACE, ALVIS, BERKELEY, BORGLAND, D.A.F., FAIRTHORPE,  
JENSEN, LOTUS, MORGAN, N.S.U., PEERLESS, PORSCHE

## WORKSHOP ASSEMBLY EQUIPMENT

### FOR NUMBER PLATE ASSEMBLY

The quick service demanded of the Number Plate business can be met with the aid of Bluemel's Workshop Assembly Equipment with which a pair of plates can be made up in a few moments. Offered on a free loan basis it will put Number Plate assembly on a profitable footing.

**TEMPLATES** They ensure the accurate location of the holes to be pierced for the rivets.

For use when fitting 3½" symbols

"Oblong" pattern 1524/2

"Square" pattern 1525/2

Loose inserts for above 1526

For use when fitting 3¼" symbols

"Oblong" pattern 1842

"Square" pattern 1843

Loose inserts for above 1844

Ditto for fig. 1 1845

**PIERCING PRESS** Ref. 1846. Our new improved pattern is a smaller version, lighter in operation. Popularly priced it is adequate for the needs of the Motor Agent with a moderate output of Number Plates using our standard alloy blanks.

**STAND** Ref. 1530A. To raise the above press above bench level.

**PUNCH** Ref. 1532/3. For setting star washers.

**RIVETING BLOCK** Ref. 1534. Protects the characters whilst face downwards when setting the washers.



# PETROL PUMP SWITCH OFF HERE

Ref. 562A (26" x 8")

Ref. P562 (15" x 4½")

## VEHICLE TESTING STATION SIGNS



Ref. 1774 and 1849 (24" x 25")

# ON TOW

Ref. P749 (21" x 5")

# TOWING

Ref. P749A (21" x 5")

## CAUTION NO HAND SIGNALS

Ref. P589  
(15" x 4½")

## DISABLED DRIVER NO HAND SIGNALS

Ref. P588  
(15" x 4½")

## LEFT HAND DRIVE

Ref. 590 (10" x 4")

## CAUTION AIR BRAKES

Ref. 577 (11" x 4½")

## SPECIAL SIGNS

A range of die-pressed plates in heavy gauge aluminium alloy for strength and durability. Stove enamelled to ensure maximum weather resistance. With raised letters in black or colour on a white background or with polished letters on a black background.

The examples shown on this page have been selected from approximately 30 — our trade price list includes the full range.

### VEHICLE TESTING STATION SIGNS

High grade signs for Vehicle Service Stations which have been appointed to conduct tests on vehicles, as required by the Road Traffic Act.

Ref. 1774 A robust sign in enamelled aluminium alloy. Blue background with white raised letters etc.

Ref. 1849 A lower priced sign in steel with blue enamelled background and white letters etc.

### VEHICLE TESTING STATION SUPPLEMENTARY SIGN

Ref. 1801 A Supplementary sign for Vehicle Testing Stations is available; it is a replica in a plastic case of the official pattern illustrated on this page, white on a blue ground and one quarter actual size (11½" x 10¼"). Permanent adhesive fixing — no screws required.

## RED REFLECTIVE WARNING TRIANGLE



Ref. 1792

### ERECTED INSTANTLY FROM A FOLDED POSITION WITHOUT NUTS OR BOLTS

Placed in a suitable position before a breakdown it will give ample warning of the obstruction to approaching traffic — day or night. Faced with a Red material which is highly efficient in its ability to reflect the light of headlights from a considerable distance.

Made in heavy gauge material for strength, rigidity and stability when erected. Thoroughly weatherproof. Compulsory in certain parts of the Continent of Europe, it is an item of equipment which is becoming a necessity here with the rapid increase in motor traffic.

Height when erected 16". Folds after use to pack into a slim plastic case (approx. 2½" x 18") for carrying in the vehicle.



## ADHESIVE BACKED

# LETTERS AND FIGURES

## FOR REGISTRATION NUMBERS

**WHITE CHARACTERS.** Made from durable, easily cleaned plastic material coated on the reverse with a weatherproof and permanent, pressure sensitive adhesive, this is protected by a waxed paper which must be removed for fixing.

1 1/2", Ref. No. 1775

3 1/8", Ref. No. 1829

2 1/2", Ref. No. 1777

3 1/2", Ref. No. 1779

**SILVER CHARACTERS.** Consisting of a metalised film permanently laminated to a tough supporting material processed on the back with an adhesive, as above. The bright silver colour finish will not tarnish or fade and is unaffected by water, detergents, grease or oil.

1 1/2", Ref. No. 1776

3 1/8", Ref. No. 1830

2 1/2", Ref. No. 1778

3 1/2", Ref. No. 1780

This type of character is easily fixed in a moment to any clean, dry surface. Templates are available on request, with orders for suitable quantities of any size.

## DISPENSER PACKS

These compact containers have a separate compartment for each letter and figure. The contents are thus arranged neatly, orderly and stored in perfect condition permitting the immediate selection of characters required.

Popular size dispensers measure 18" x 14"

The pack containing 3 1/2" characters is 17 1/2" x 12 1/2" and fitted with a lift-out tray.

### CONTENTS OF THE POPULAR SIZE DISPENSER:

#### 1 1/2" CHARACTERS

#### 2 1/2" CHARACTERS

One doz. each figure 0-9      Half doz. each figure 0-9  
One doz. each letter A-Y      Half doz. each letter A-Y  
(excluding I, Q and Z)      (excluding I, Q and Z)

Together with Templates and Instructions.

With WHITE Characters, Ref. 1795

With SILVER Characters, Ref. 1800

### CONTENTS OF LARGER DISPENSER:

#### NEW SIZE 3 1/8" CHARACTERS

One doz. each figure 0-9 and one doz. each letter A-Y (excluding Q & Z), together with Template and Instructions.

With WHITE Characters, Ref. 1833

With SILVER Characters, Ref. 1834

#### 3 1/2" CHARACTERS

One doz. each figure 0-9, and one doz. each letter A-Y (excluding Q & Z), together with Template and Instructions.

With WHITE Characters, Ref. 1797

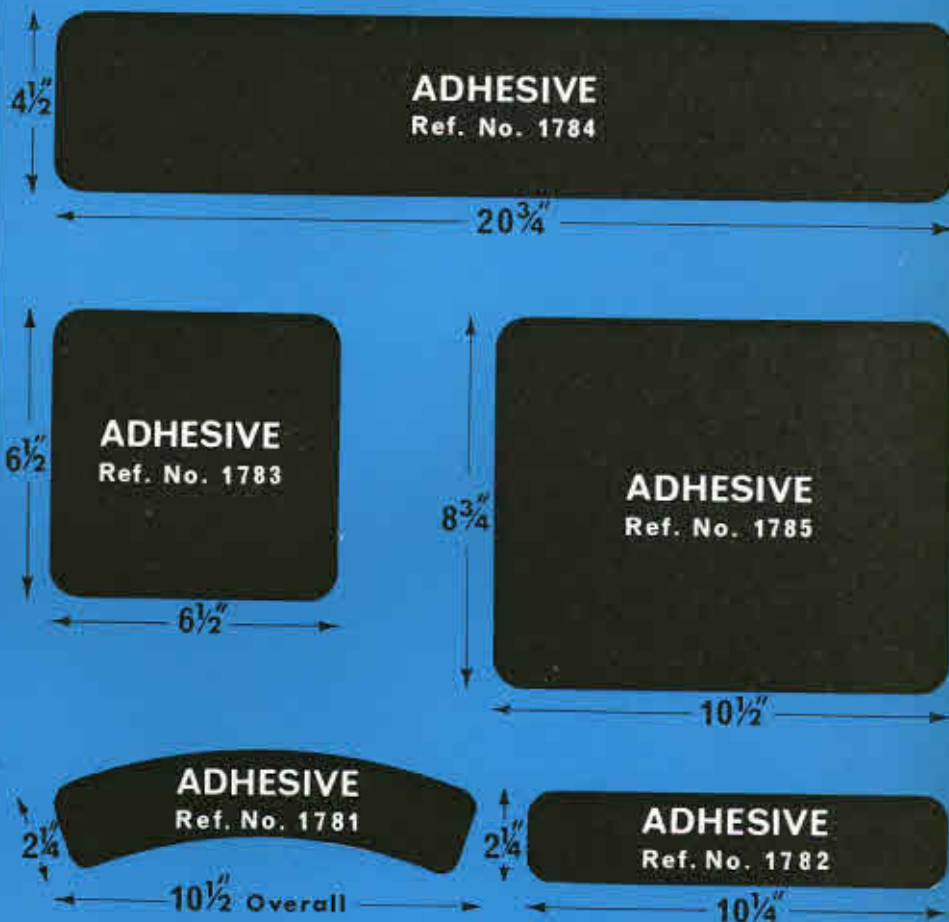
With SILVER Characters, Ref. 1798

The contents of any pack can be increased to customers' requirements at additional cost. Maximum per compartment approximately four dozen.

## ADHESIVE BACKED

# BLACK BACKGROUNDS

The perfect background for our adhesive Letters and Figures, this black plastic material is processed on the reverse with a pressure sensitive adhesive protected by a paper backing which must be removed for fixing. It ensures that the characters are easily read particularly over a coloured surface; the whole assembly is durable and easily kept clean.



Ref. No. 1781. Curved. Takes six 1 1/2" x 1 1/4" characters.

Ref. No. 1782. To take six 1 1/2" x 1 1/4" characters.

Ref. No. 1783. To take six 2 1/2" x 1 1/2" characters or three rows of size 1 1/2" x 1 1/4".

Ref. No. 1784. Suitable for six 3 1/8" x 2 1/4" characters, alternatively one row of 2 1/2" x 1 1/2" or two lines of 1 1/2" x 1 1/4" for signs, etc.

Ref. No. 1785. Suitable for six 3 1/2" x 2 1/4" characters in two rows. Either of the smaller characters can be fixed as required for signs, etc.

Also available in the following sizes for seven unit registrations: — Ref. No. 1851. Curved, 1 1/2" x 2 1/4"; Ref. No. 1852. Rectangular, 10 1/2" x 2 1/4"; Ref. No. 1853. 8 1/2" x 6 1/4" deep, Rectangular; Ref. No. 1854. 6 1/2" x 9 1/4" deep, Rectangular.



## SAFETY HARNESS

### (ADULT PATTERN)

A type possessing a very high standard of quality and design, which withstood the stringent tests demanded by the B.S.I. and carries their kite mark of approval.

The combined diagonal and lap strap allows complete freedom of movement for the arms and legs and is the less tiresome type to wear, consistent with maximum safety.

The diagonal portion will prevent jack-knifing of the body and the lap section will restrain its forward movement out of the seat during violent deceleration.

Strong washable Nylon webbing, 2" wide, is incorporated in its fabrication with a trouble-free instant locking or release buckle. It is easily adjusted from the sitting position to suit a person of any stature.

The simple two-point floor fixing, which will not obstruct the movement of the rear passenger's feet, is regarded as the strongest method of attachment and can be made with the aid of a standard hand drill.

Ref. No. 1840



Ref. No. 1839

## "JUNIOR" SAFETY HARNESS

It is generally accepted that a full Harness such as this — with two shoulder straps — offers the maximum possible amount of protection. In addition, it is possible to fit the main anchorage points well apart to prevent excessive pressure round the body during heavy braking or upon impact.

An unpleasant "squeezing" sensation can occur when the anchorage points are situated too close.

With this pattern it has been made easy for the child to leave the car temporarily, simply by detaching two spring hooks at their anchorage points. There is no need to remove the body straps — in the same way as a pram harness.

The same high standard of quality and care is embodied in its construction as for the adult pattern.





## PLASTIC DRIP TRAYS

TO KEEP FLOORS CLEAN IN SHOWROOMS OR GARAGES

Made in a flexible material which is tough and enduring, it is light to handle and easily cleaned; rustless and acid resisting. One of these, placed beneath a vehicle, will prevent oil drips disfiguring the floor.

Available in White, Blue, Green or Grey also other colours in suitable quantities by arrangement. Supplied to the trade in cartons containing one dozen assorted colours.

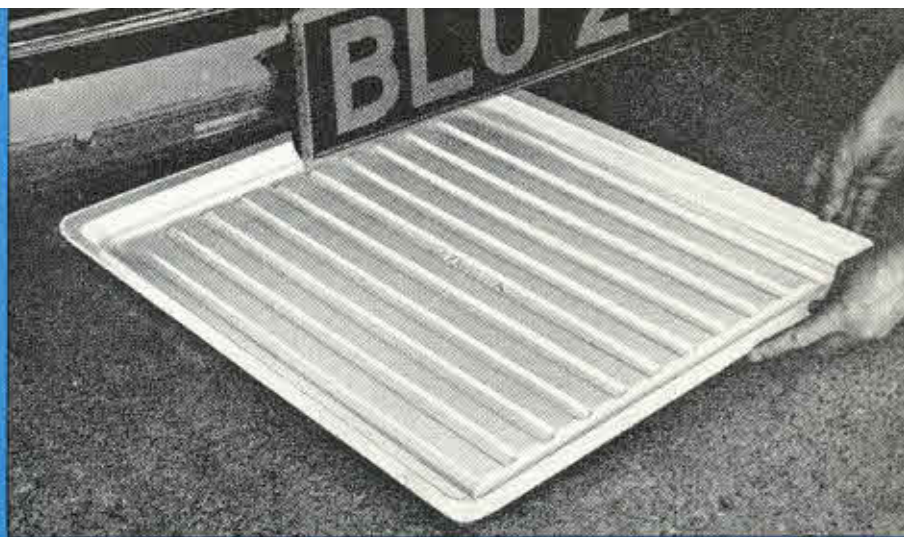
As illustrated: Size— $26\frac{1}{2}'' \times 23\frac{1}{2}'' \times \frac{7}{8}''$

White—Ref. No. 1793 Colours—Ref. No. 1794

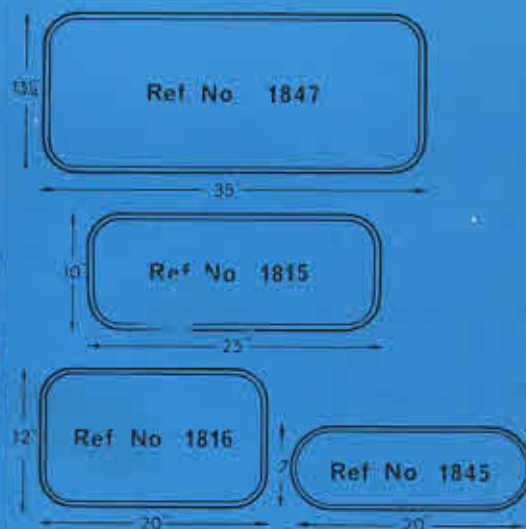
Motor Cycle Size:  $17\frac{1}{2}'' \times 11'' \times \frac{7}{8}''$

White—Ref. No. 1817 Colours—Ref. No. 1818

Also useful for many household purposes and to owners of Greenhouses, etc.



Ref. No. 1793



## ANTI-MIST PANELS

GIVING GOOD VISIBILITY—SO ESSENTIAL TO SAFETY

The surround of this shaped plastic panel is processed with a pressure sensitive adhesive permitting easy attachment.

Flexible, to conform to the usual contours of a rear window, it provides a large mist-free area giving adequate visibility to the rear. Can be fitted in a few moments. Printed instructions are included with each panel.

Made in the following sizes:

Ref. No. 1815	23" x 10"
Ref. No. 1816	20" x 12"
Ref. No. 1847	35" x 13 1/2"
Ref. No. 1848	20" x 7"



## GEAR LEVER KNOBS

A useful display box of 12 black plastic knobs with assorted threads. Solid throughout. For replacement purposes on motor-cycles, three-wheelers and cars. Always clean and pleasant to handle.

Ref. No. 1730  $1\frac{3}{8}''$  diameter Spherical Pattern.

Ref. No. 1730T Tapered Pattern.





Ref. No. 1766



Ref. No. 1519



Ref. No. 1763



Ref. No. LLP102



Ref. No. LLP101

## INTERNATIONAL IDENTITY PLATES & LOOSE LETTERS

Ref. No. 1519. "GB," "CD," "CC" or other single or two  $3\frac{1}{2}$ " black letters on a white oval identity plate. Regulation size  $7" \times 4\frac{1}{2}"$  approx.

Ref. No. 1766. "GB" chromium-plated separate letters,  $3\frac{1}{2}" \times 2"$ . Continental pattern with a strong, adhesive backing—no drilling is necessary for flush fitting to any clean, dry, wax-free surface.

Each set is in an attractive pack.

Ref. No. 1744 (not illustrated). "GB" chromium-plated separate letters,  $3\frac{1}{2}" \times 2\frac{1}{2}"$ . Bolt and nut fixing.

## ADHESIVE EMBLEMS

GB's sealed in transparent, flexible plastic cases which are impervious to weather conditions and will not rust or corrode. They are processed on the reverse with a permanent adhesive for flush fixing—no drilling is required. Weatherproof and easily cleaned.

Ref. No. 1771. "GB"  $3\frac{1}{2}"$  black italic letters on a white oval,  $7" \times 4\frac{1}{2}"$ .



Ref. 1814B

Ref. No. 1770. "GB"  $1\frac{1}{2}"$  black italic letters on a white oval,  $4\frac{1}{2}" \times 3"$ .

Ref. No. 1814B. DISPLAY CARD holding four GB's; Ref. No. 1771 and one set of loose letters in a pack, Ref. 1766.

## LEARNER PLATES

LIGHT, WEATHER RESISTING with holes, to tie on. Ref. No. LLP101. In heavy gauge flat plastic, printed. One dozen pairs in a display unit.

Ref. No. LLP102. In tough, embossed plastic material.

Ref. No. LLP103. A cheaper line in glazed Bristol Board, printed with Red 'L'.

## TRAILER SIGNS

Ref. No. 1763. Current International pattern. The 7"-sided white triangular background is of special tough, enduring plastic which is light and rustless. Inset are nine  $\frac{3}{4}"$  red reflex reflectors.



ADHESIVE BACKED

## COLOURED LETTERS AND FIGURES

AVAILABLE IN FOUR SIZES . . . .

Ideal for making up Notices, Signs, Name Plates, Plant Numbering, Stores Reference Numbers, Warnings, Direction Signs, Etc.

Coated on the reverse with a weather-proof and permanent, pressure sensitive adhesive. This is protected by a waxed paper which, must be removed for fixing. These Characters can be fixed in a moment to any clean, dry surface free from wax or silicon deposits.

Produced in Black, White, Red, Blue, Yellow, Green, Fluorescent Orange, Silver and Chrome Silver (ribbed pattern).

Silver Characters (not illustrated) consist of a metalised film permanently laminated to a tough supporting material. The bright silver finish will not tarnish or fade and is unaffected by water, detergents, grease or oil.

## MAGNETIC LETTERS AND FIGURES

These permanently magnetised characters will remain firmly attached when placed onto any steel background plate even if it is painted or covered in a similar way.

They have a wide range of applications in addition to the Motor and Cycle Trades and could be used in connection with almost any business.

Made from a tough rubberised material which will give a long and useful life. The block style of lettering is easily read and they are available in a striking fluorescent magenta also black, white and a range of standard colours.

Each Character can be removed and re-positioned as often as required.

## Plastic Covered Metal Background Plates

For displaying magnetic letters and figures where it is preferred not to attach them to articles for sale.

Each plate is rust-proofed and has a plastic surface of imitation wood grain.

Sizes as follows:— 6" x 1½", 6" x 2½", 12" x 1½", 12" x 2½", 18" x 1½", 18" x 2½".

Available in dozens or packs as follows:—

Pack Ref. No. M/5 contains 3 of each size, 1½" deep with struts.

Pack Ref. No. M/6 contains 3 of each size, 2½" deep with struts.

Letters or Figures can be supplied separately by the dozen or in convenient inexpensive Kits, as follows:—

Ref. No. M/1 with a total of 72 1½" figures only.

Ref. No. M/2 with a total of 144 1½" figures only.

Ref. No. M/3 with a total of 72 2½" figures only.

Ref. No. M/4 with a total of 144 2½" figures only.

Any Kit can be supplemented by additional items if required.

# STORES

# SPARES

# SERVICE

# CASHIER

# TOILETS

# GREASING BAY

# SELF-CLINGING COLOURED LETTERS AND FIGURES

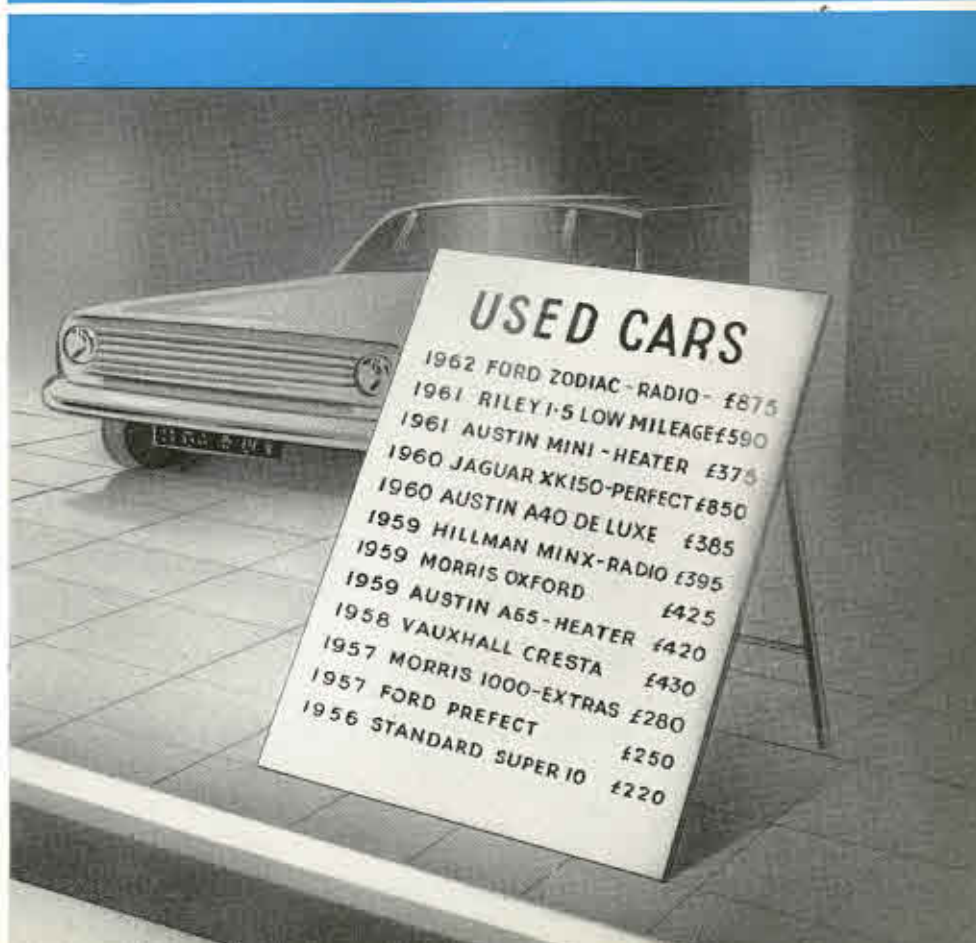
IN UNCOATED, POLISHED  
MATERIAL

Suitable for use on smooth surfaces such as windscreens, windows, partitions, etc. inside or outside.

No adhesive is necessary.



Produced in Black, White, Red, Blue, Yellow or Green. Not obtainable in fluorescent colours or Silver. This type can be removed and repositioned as often as required.



## PRODUCTS OF THE COMPANY

NUMBER PLATES AND COMPONENTS

STEERING WHEELS

SAFETY HARNESS FOR CARS

DRIP TRAYS

INTERNATIONAL IDENTITY PLATES

TRAILER SIGNS

ANTI-MIST PANELS

'L' PLATES

CYCLE MUDGUARDS

MUDFLAPS

DRESS SHIELDS

CYCLE AND MOTOR CYCLE INFLATORS

HANDLEGRIPS, TAPE & END PLUGS

INFLATOR CONNECTIONS

CONTROL KNOBS AND LEVER HANDLES

REFLECTORS

HAND CONTROL WHEELS

PLASTIC COVERINGS

PLASTIC MOULDINGS BY COMPRESSION, INJECTION  
AND EXTRUSION PROCESSES

FOOTBALL PUMPS  
AND ADAPTORS

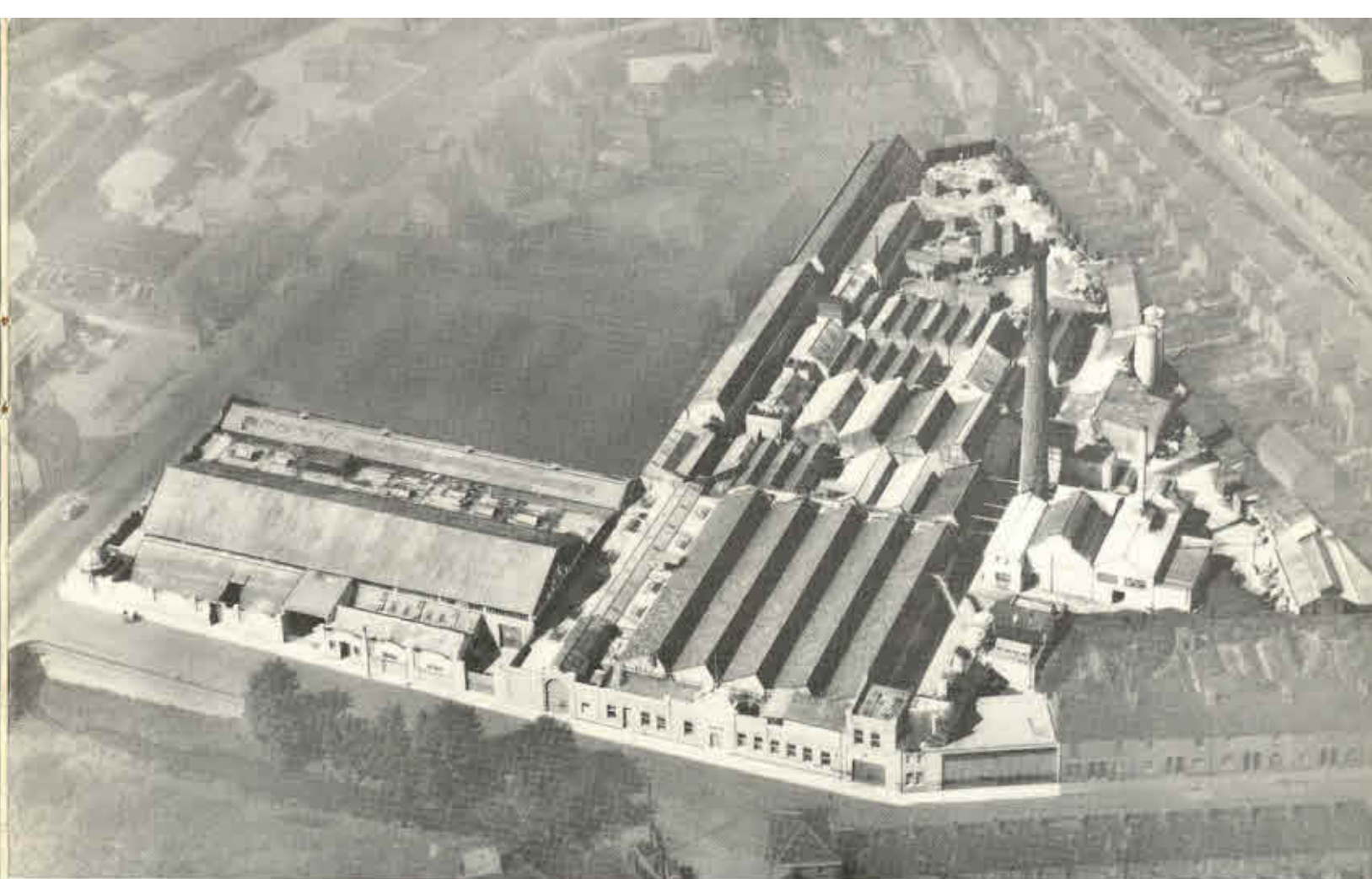
SIGNS

TROUSER BANDS

OILERS

ALSO ADHESIVE AND SELF-CLINGING COLOURED PLASTIC  
AND MAGNETIC LETTERS AND FIGURES, ETC.





*Aerial View of Dover Works, Northampton*

## INDEX

	Page No.
Anti-Mist Panels	9
Assembly Packs	4
Assembly Packs, Distributors' Order Guide	5
Black Plastic Backgrounds	7
Drip Trays, Plastic	9
G.B. Chrome-plated Letters	10
G.B. Adhesive Emblems	10
G.B. and International Identity Plates	10
Knobs, Gear Lever	9
Learner Plates	10
Letters and Figures—	
Adhesive Plastic	2, 7, 11
Dispenser Packs	7
'Flat Top' Opal	1
'Flat Top' Silver	1
'Flat Top' White	1
'Opalescent'	3
'Panelled' Silver	2
Silver Alloy 'Flat Top'	1

Letters and Figures — (continued)	Page No.
'Panelled' White	2
'Pyramid' White	3
'Satin Silver'	3
Self-clinging Plastic	11
'Silverite'	3
Magnetic	11
Number Plate Blanks	3
Number Plates—	
Adhesive Type	2
Embossed Type	2
'Flat Top' Types	1
'Panelled' Pattern	2
'Pyramid' Style	3
Safety Harness—	
Adult Pattern	8
'Junior'	8
Signs—	
Special	6
Vehicle Testing Station	6
Vehicle Testing Station, Supplementary	6
The Company's Products	12
Trailer Sign, International	10
Warning Triangle, Red Reflective	6