

ROYAL AUTOMOBILE CLUB

31, Belgrave Square, London, S.W.1.

Form of recognition in accordance with Appendix J to the International Sporting Code of the

FEDERATION INTERNATIONALE DE L'AUTOMOBILE

British Motor Corporation in
 Manufacturer in association with Gogger Model Austin Morris Mini Cooper
 Car Company
 Serial No. of chassis... KA234 & C/4257 Manufacturer... British Motor Corporation
 engine... 374 A 379 Manufacturer... British Motor Corporation

Recognition is valid from... 19 Jan 1968... last... 19...
 The manufacturer of the model described in this recognition form was started in
 November 1959 and the minimum production of 3000 exceptional cars
 in accordance with the specifications of this form was reached on... October 1964

Figure A. 1/2 view of car in front



M.A.S. Stack

Make

Austin / Morris

Model Mini Cooper

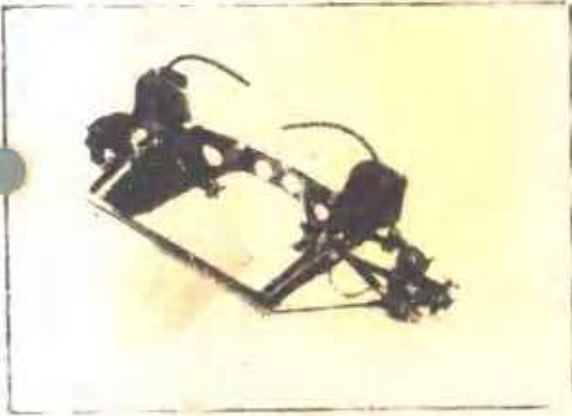
F.I.A. No. 1111



inter
drive
remo

gh

C

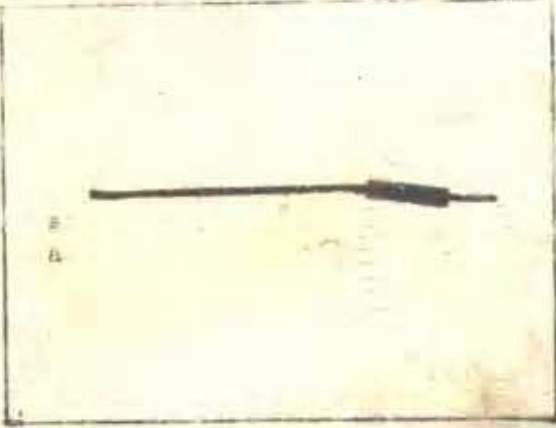


E



real

1111

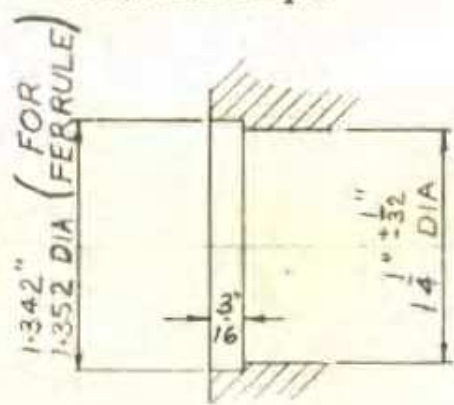


E
A

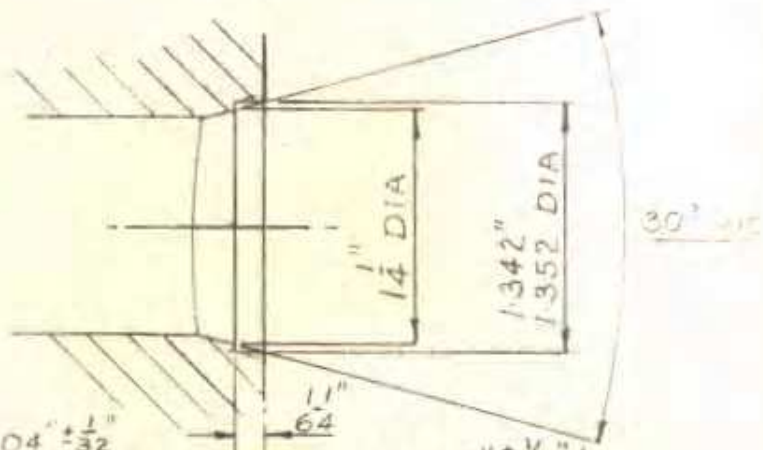
I



Drawing inlet manifold ports, side of cylinder-head. Indicate scale or dimensions and manufacturing tolerance.



Drawing of entrance to inlet port of cylinder-head. Indicate scale or dimensions and manufacturing tolerance.



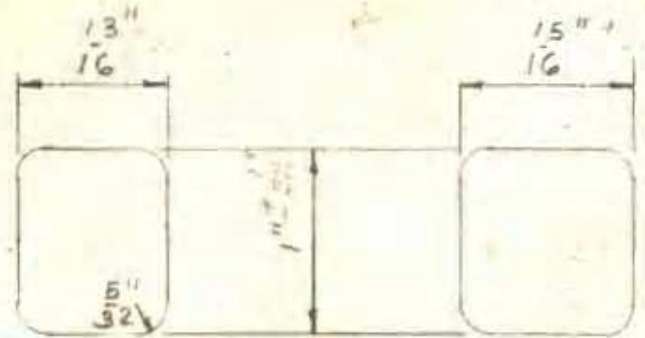
Drawing of exhaust manifold ports, side of cylinderhead. Indicate scale or dimensions and manufacturing tolerance.



FRONT & REAR

CENTRE

Drawing of exit to exhaust port of cylinderhead. Indicate scale or dimensions and manufacturing tolerance.



FRONT & REAR

CENTRE

GENERAL TOLERANCE ±.010"

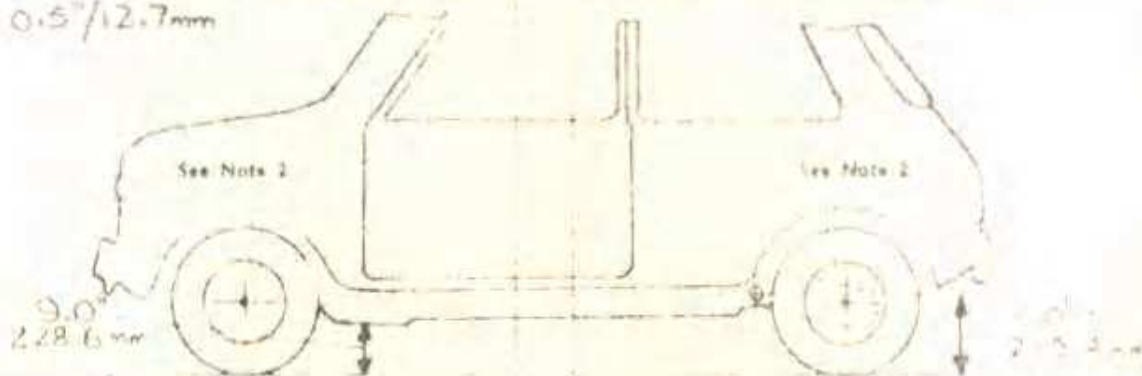
NOTE 1.

All dimensions must be given in two measuring systems, see Note 3

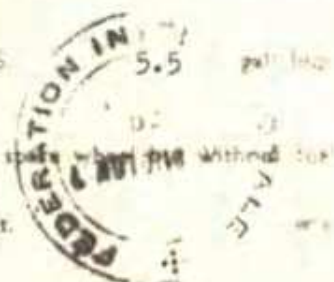
CAPACITIES AND DIMENSIONS

1 Wheelbase	2036.	mm.	80.15	inches
2 Front track				
	1207.0	mm.	47.44	inches
3 Rear track				
			1164.0	mm.
			45.87	inches

$\pm 0.5 / 12.7 \text{ mm}$



4 Overall length of the car	305.5	cm.	120.25	inches
5 Overall width of the car	141.0	cm.	55.5	inches
6 Overall height of the car	135.0	cm.	53.0	inches
7 Capacity of fuel tank (reserve included)	25	liters	6.6	gall U.S.
8 Testing Capacity	4			
9 Weight: Total weight of the car with normal equipment, water, oil, and spare wheel without fuel or repair tools.	635	kg.	1400.	lbs.



NOTE 2.

Differences in track caused by the use of other wheels with different rim widths must be shown when recognition is requested for the wheels concerned. Specify ground clearance in relation to the track and give drawing of two easily recognisable points at front and rear at which measurements were taken. These ground clearance dimensions are only for information when checking the track and do not in any way affect the eligibility of the car.

NOTE 3.

CONVERSION TABLE

1 inch/pouce	— 2.54	cm	1 quart US	— 0.946	liters
1 foot/pied	— 30.4794	cm	1 pint (pt)	— 0.473	liters
1 sq. inch/pouce carre	— 6.452	cm ²	1 gallon imp.	— 4.546	liters
1 cubic inch/pouce-cube	— 16.387	cm ³	1 gallon US	— 3.785	liters
1 pound/livre (lb)	— 453.593	gr	1 hundred weight (cwt.)	— 50.807	kg

CHASSIS AND COACHWORK (Photographs A, B and C)

20. Chassis/body construction : ~~separate~~ / unitary construction
 21. Unitary construction, material(s) **All steel**

SEPARATE CONSTRUCTION - MATERIALS

- | | |
|---|--|
| 22. Chassis | 23. Coachwork |
| 24. Number of doors 2 | Material(s) All steel |
| 25. Bonnet Steel | 26. Boot Lid Steel |
| 27. Rear Window Safety glass | 28. Windscreen Toughened or laminated glass |
| 29. Front door windows Safety glass | 30. Rear door windows |
| 31. Sliding system of door windows Horizontal channels | |
| 32. Material(s) of rear-quarter light Safety glass | |

ACCESSORIES AND UPHOLSTERY

38. Interior heating : ~~yes~~ - ~~no~~ 39. Air conditioning : ~~yes~~ - ~~no~~
 40. Ventillation : ~~yes~~ - ~~no~~
 41. Front seats, type of upholstery **Leather cloth**
 42. Weight of front seat(s), complete with supports and rails, out of the car:

7.27 kg. 16.0 lbs. each

- | | | | |
|---|--------|------|---------------|
| 43. Rear seats, type of upholstery Leather cloth | | | |
| 44. Front bumper, material(s) Steel | Weight | 2.15 | kg. lbs. |
| 45. Rear bumper, material(s) Steel | Weight | 2.15 | kg. lbs. |

WHEELS

- | | | | |
|--|-------|-------|----------------|
| 50. Type Pressed Steel : | | | |
| 51. Weight (per wheel, without tyre) | | 3.175 | kg. lbs. |
| 52. Method of attachment 4 stud | | | |
| 53. Rim diameter | 254.0 | mm. | 10.0 ins. |
| 54. Rim width | 88.8 | mm. | 3.5 ins. |



STEERING

60. Type **Rack and Pinion**
 61. Servo-assistance : ~~yes~~ - ~~no~~
 62. Number of turns of steering wheel from lock to lock **2.33**
 63. In case of servo-assistance.

FOUR STROKE ENGINES

170. Number of camshafts 1 171. Location Cylinder block
 172. Type of camshaft drive Chain
 173. Type of valve operation O.H.V. pushrod

INLET (see page 4)*

180. Material(s) of inlet manifold Aluminium Alloy
 181. Diameter of valves 30.86 mm. 1.216 ins.
 182. Max. valve lift 8.1 mm. 0.318 in. 183. Number of valve springs 2 per valve
 184. Type of spring Coil 185. Number of valves per cylinder 1
 186. Tappet clearance for checking timing (cold) 0.53 mm. 0.021 ins.
 187. Valves open at (with tolerance for tappet clearance indicated) 16° B.T.D.C.
 188. Valves close at (with tolerance for tappet clearance indicated) 56° A.B.D.C.
 189. Air filter, type Replaceable paper element

EXHAUST (see page 4)

195. Material(s) of exhaust manifold Pressed steel
 196. Diameter of valves 25.4 mm. 1.0 ins.
 197. Max. valve lift 8.1 mm. 0.318 in. 198. Number of valve springs 2 per valve
 199. Type of spring Coil 200. Number of valves per cylinder 1
 201. Tappet clearance for checking timing (cold) 0.53 mm. 0.021 ins.
 202. Valves open at (with tolerance for tappet clearance indicated) 51° B.B.D.C.
 203. Valves close at (with tolerance for tappet clearance indicated) 21° A.T.D.C.

CARBURETION (photograph N)

210. Number of carburettors fitted 2 211. Type Variable choke
 212. Make S.U. 213. Model HS2
 214. Number of mixture passages per carburettor 1
 215. Flange hole diameter of exit port(s) of carburettor 31.75 mm. 1.25 ins.
 216. ~~Minimum diameter of venturi~~/minimum diam, with piston at maximum height 22.22 mm. 0.875 ins.

INJECTION (if fitted)

220. Make of pump 221. Number of plungers
 222. Model or type of pump 223. Total number of injectors
 224. Location of injectors
 225. Minimum diameter of inlet pipe mm. ins.

* For additional information concerning two-stroke engines and super-charged engines, see page 13.

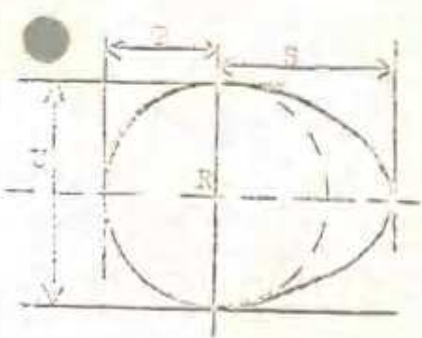


ENGINE ACCESSORIES

- 230. Fuel pump : ~~mechanical and/or~~ electric.
- 231. No. fitted 1
- 232. Type of ignition system H.T. coil
- 233. No. of distributors 1
- 234. No. of ignition coils 1
- 235. No. of spark plugs per cylinder 1
- 236. Generator, number fitted 1
- 237. Method of drive Wedge belt
- 238. Voltage of generator 12 volts.
- 239. Battery, number 1
- 240. Location Luggage compartment
- 241. Voltage of battery 12 volts

ENGINE AND CAR PERFORMANCES (as declared by manufacturer in catalogue)

- 250. Max. engine output 55 (type of horsepower: BHP) at 5800 rpm
- 251. Max. rpm 6250 output at that figure 54
- 252. Max torque 57 lbs. ft. at 3000 rpm
- 253. Max speed of the car km/hour miles/hour



R = centre of camshaft.

Inlet cam

- S = 20.56 mm. 0.809 inches
- T = 13.78 mm. 0.542 inches
- U = 27.66 mm. 1.089 inches

Exhaust cam

- S = 20.56 mm. 0.809 inches
- T = 13.78 mm. 0.542 inches
- U = 27.66 mm. 1.089 inches



IMPORTANT - The conformity of the car with the following items of the present recognition form is to be disregarded during the scrutineering, when the vehicle has been entered in group 2 (Touring cars) or 3 (Grand Touring cars): 41, 72, 80, 91, 142, 143, 144, 145, 146, 153, 156, 157, 160, 161, 162, 163, 164, 182, 184, 186, 187, 188, 189, 199, 201, 202, 203, 212, 213, 215, 216, 222, 225, 230, 250, 251, 252, 253, and photographs I, M and N.

During the scrutineering of cars entered in group 4 (sports cars) only the following items of the present recognition form are to be taken into consideration: 1, 2, 3, 9, 20, 21, 22, 23, 24, 25, 26, 70, 71, 78, 79, 90, 130, 131, 132, 133, 134, 135, 136, 137, 138, 139, 140, 141, 147, 148, 149, 150, 158, 159, 170, 171, 172, 173, 185, 200, 270, 271, 274, 275, 290, 291, 292 and photographs A, B, D, E, F, G, H, J, K and O.

The vehicle described in this form has been subject to the following amendments:

on.....19.. rec.no.....List.....on.....19.. rec.no.....List.....
on.....19.. rec.no.....List.....on.....19.. rec.no.....List.....
on.....19.. rec.no.....List.....on.....19.. rec.no.....List.....
on.....19.. rec.no.....List.....on.....19.. rec.no.....List.....
on.....19.. rec.no.....List.....on.....19.. rec.no.....List.....

Optional equipment affecting preceding information. This to be stated together with reference number.

293. Final drive ratio - 4.133:1

Number of teeth - 15/62



ADDITIONAL INFORMATION FOR CARS FITTED WITH TWO-CYCLE ENGINES

System of cylinder scavenging

Type of lubrication

Size of inlet port :

Length measured around cylinder wall mm.

Height mm. Area mm²

Size of exhaust port:

Length measured around cylinder wall mm.

Height mm. Area mm²

Size of transfer port:

Length measured around cylinder wall mm.

Height mm. Area mm²

Size of piston port:

Length measured around piston mm.

Height mm. Area mm²

Method of pre-compression

Bore and stroke of pre-compression cylinder, if fitted mm.

Distance from top of cylinder block to lowest point of inlet port mm.

Distance from top of cylinder block to highest point of exhaust port mm.

Distance from top of cylinder block to highest point of transfer port mm.

Drawing of cylinder ports

Supercharger, if fitted

Make Model, or Type No.
 Type of Drive Ratio of Drive

Fuel Injection, if fitted

Make of Pump Model or Type No.
 Make of injectors Model or Type No.
 Location of injectors




MOTOR SPORT DIVISION
The Royal Automobile Club,
31 Belgrave Square, London, S.W.1

Manufacturer B.M.V.
Model Mini-Cooper 998
F.I.A. Recognition No. 5013 *1/EY*
Amendment No. 1

Amendment to Form of Recognition

FEDERATION INTERNATIONALE DE L'AUTOMOBILE

No.	Reference No.
<u>EVOLUTION</u>	
1.	<p data-bbox="622 571 726 616"><i>to its</i></p> <p data-bbox="351 604 1246 739">3. Optional extra for SP tyres distance piece (Part No. 21A/1292) fitted with rear brake drums to increase rear track from 45.87 ins to 46.87 ins.</p>
	
2.	<p data-bbox="351 1041 1246 1232">3. From 21.2.67 (Austin Mini-Cooper chassis nos. CA257/981485 (RHD), CA257/98414 (HD) and Morris Mini-Cooper chassis nos. KA254/979618 (RHD), KA254/986469 (LHD) Mini Moke brake drums fitted on rear (Part No. 21A 1457) to increase rear track from 45.87 ins to 46.87 ins.</p>

John ...
1967

Date amendment is valid from

1st July 1967
list 16/4

Stamp of F.I.A./R.A.C.



MOTOR SPORT DIVISION
The Royal Automobile Club,
31 Belgrave Square, London, S.W.1

Manufacturer BMC

Model Mini Cooper

F.I.A. Recognition No. 5013

12/1V

Amendment No. 2

Amendment to Form of Recognition

FEDERATION INTERNATIONALE DE L'AUTOMOBILE

No. _____ Reference No. _____

Variant - Group 2

Wing Extension Kit - C-AJ3 3316



Rear



Front

Fuel tank - supplementary, Part No. 21A1517

7. Capacity - 25.0 litres/5.5 gallons

Date amendment is valid from

1st March 1968
last 1968/4



Richard [Signature]

Stamp of F.I.A./R.A.C.



MOTOR SPORT DIVISION
 The Royal Automobile Club,
 31 Belgrave Square, London, S.W.1

Manufacturer British Motor
 Model Austin/Morris Mini Cooper
 F.I.A. Recognition No. 3013
 Amendment No. 3/2E

Amendment to Form of Recognition

FEDERATION INTERNATIONALE DE L'AUTOMOBILE

No. Reference No.

Evolution - Group 1
Austin/Morris Mini Cooper Mk 1
Chassis Serial No. - K-2156 V 1 - JP

A.



B.



Date amendment is valid from

1st May 1968
List 1968/6

Stamp of F.I.A./R.A.C.

Hubert Brown



MOTOR SPORT DIVISION
 The Royal Automobile Club,
 31 Belgrave Square, London, S.W.1

Manufacturer **RMC**
 Model **Mini Cooper SW 90**
 F.I.A. Recognition No. **5013**
 Amendment No. **4/2U**

Amendment to Form of Recognition

FEDERATION INTERNATIONALE DE L'AUTOMOBILE

No. | Reference No.

Variant - Group 2

1. 50. Road wheels - Steel
 Part No. C-AST 182
51. 4.51 kg./10.0 lbs.
52. 4 studs and nuts
53. 254.0 mm/10.0 inches
54. 114.6 mm/4.5 inches
2. Front track - 1251 mm/49.25 inches
3. Rear track - 1250 mm/49.21 inches



2. Thermostat housing insert - Part No. 110176

Date amendment is valid from

11 Jan 1965
inst 1965/1

Stamp of F.I.A./R.A.C.





MOTOR SPORT DIVISION
The Royal Automobile Club,
31 Belgrave Square, London, S.W.1

Manufacturer **BMC**
Model **Mini Cooper 998 cc**
F.I.A. Recognition No. **5013/S/3E**
Amendment No. _____

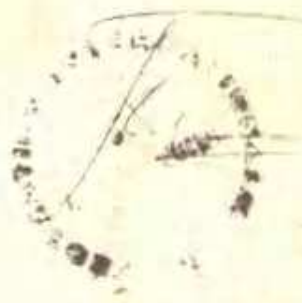
Amendment to Form of Recognition

FEDERATION INTERNATIONALE DE L'AUTOMOBILE

No.	Reference No.
	<u>Evolution - Group 1</u>
1.	Gearbox - 4 speed synchromesh
271.	No. of forward ratios - 4
272.	Synchronised forward ratios - 4
	Introduced at Engine Nos. 9FD/Xe/H101 9FD/Xe/L 101

Date amendment is valid from

1/4/69
liste 69/2



Stamp of F.I.A./R.A.C.